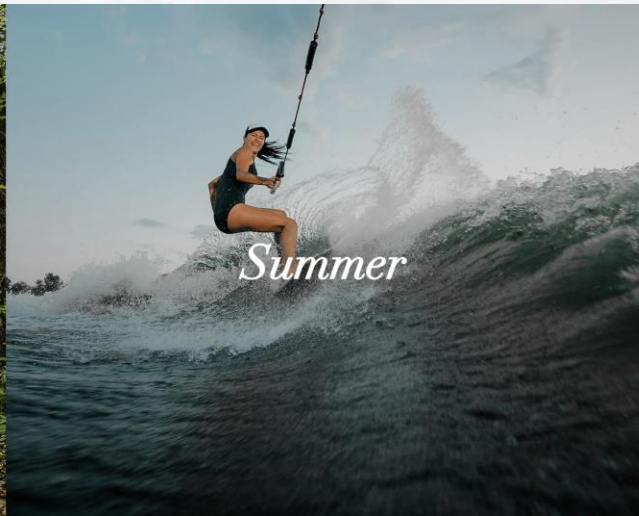


Commercial Real Estate

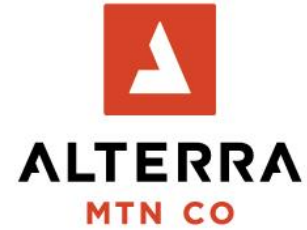
Sandpoint, Idaho

Life for all Seasons



SHOP.DINE.PLAY.STAY.LIVE.

REALM
PARTNERS



What's New

- **Alterra takes new Ownership of Schweitzer Mountain 2023**
- **Plans for continued growth and development**
- **Real estate retention**



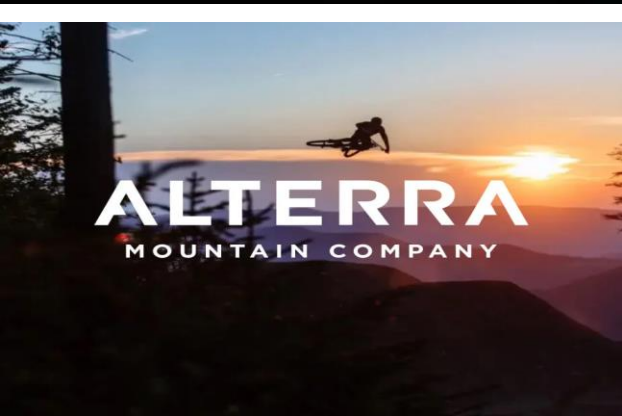


Pioneers
by nature,
Innovators
by culture


DAHER

What is the impact that Hanger space living will have on our community?

- With the acquisition of Quest, the Daher Group is now able to deploy its full range of activities in North America: aircraft manufacturing; the production of systems and equipment; along with the supply of logistics and services.



What's Current in the Industry

- Creating economic value
- Manufacturing goods and services
- Enhancing community

Play and Stay

- Structures built to suit lifestyles
- Unique investment opportunities
 - Seasons at Sandpoint Building 8 presented by: Realm Partners
 - 817 Baldy Mountain Rd presented by: Lake Homes Realty LLC (LHR)
 - Big Toys Independently owned Shop/Condo 425 Schweitzer Cutoff Rd presented by: EXP Realty (EXP)
 - Silver Wing Aviation Homes presented by: Scott Wolf Airpark – Sandpoint Airport.





Local Restaurant Update

113 Main strives to incorporate local history into its brand. They worked with the Bonner County Historical Society to pull historic photographs from the building's past and will eventually work with the public to rename the establishment. 113 Main was formerly a trolley station, dry cleaner and most recently, Truby's Health Mart.



Turning the Page, *What's Next?*

14 years at this location, Trinity does not renew lease. What is next on the horizon for City Beach location?

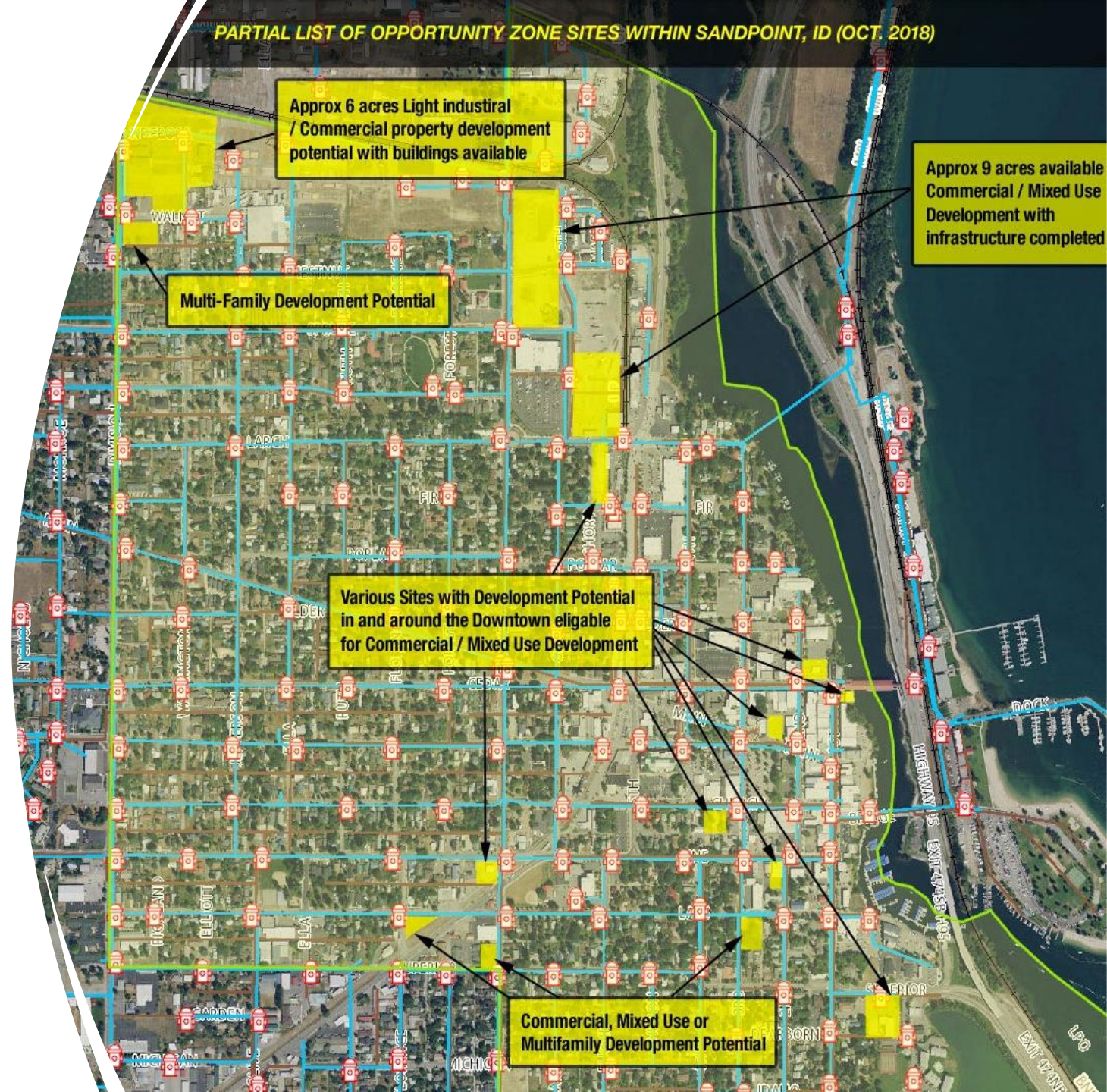


Old and New



Sandpoint's Opportunity Zone

[Attached](#) letter references what to expect in 2024



2024 MLS Stats For Bonner County

Active Commercial Building - 39 listings

- High = \$4,000,000
- Median = \$759,000
- Low = \$128,000

Pending Commercial Sales – 6 Sales

- High - \$2,900,000
- Median - \$857,500
- Low - \$90,000

Active Commercial Land – 8 listings

- High = \$2,489,000
- Median = \$1,312,500
- Low = \$185,000

Closed Commercial Sales – 2 Sales

- High - \$625,000
- Median – \$447,500
- Low - \$270,000

- 7 Units Available
- Luxury Awaits
- Endless Lake Views

 **SEASONS**
AT SANDPOINT
A Luxury Waterfront Community



PUCKETT AND TEAGUE



Presented by
– Tom
Puckett,
Owner

